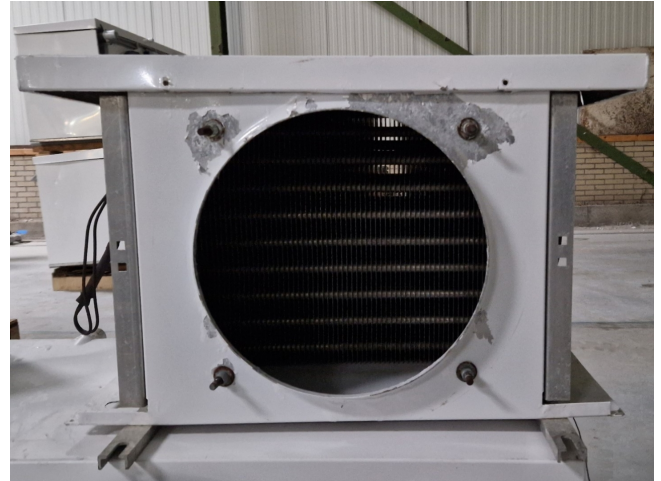


Helpman LEX 6-7

Specifications

Marka	Helpman
Typ	LEX 6-7
Ogólna wydajność w kW	2,5
Czynnik chłodzący	Freon
Liczba wentylatorów	1
Średnica wentylatora mm	7
Rozmrażanie	None
Przepływ powietrza w m ³ /h	1.500
Rozmiary	660x700x490 mm (LxWxH)
Volume	4 dm ³
Stock	1



Description

Used Helpman LEX 6-7

Used Helpman LEX 6-7 evaporator on Freon. It is possible to install a suitable fan again.

*All components of this used evaporator will be tested on good working, leak free condition (electro engines), coils, bearings. Choosing HOSBV means buying with warranty. We perform an industrial cleaning and rust spots will be covered. Also, we can arrange your shipment.

